



EQUIBATH®

REFRIGERATED CIRCULATING BATH- 6Ltr.

Applications:

- ❖ Ideal for Rotational Viscosity tests, Spectrophotometers, Refractometers, Electrophoresis, Isoelectric Focusing, Calibration, Chromatography, Condensers, Densitometers, Polarimeters and General Laboratory Cooling.

EQUIBATH advantages:

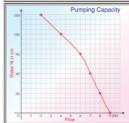
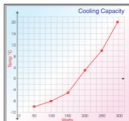
- ❖ EQUIBATH provides heating & cooling.
- ❖ Extremely compact single table top unit - saves bench & under-table space.
- ❖ Eliminates all the unwieldiness and hassles of using a separate Bath & Chiller.
- ❖ Built in circulator pumps to external devices.
- ❖ It offers highest level of performance, flexibility and control for the most demanding applications.
- ❖ Quiet operation.
- ❖ Wide operating range.

Construction:

- ❖ Crevice free stainless steel die pressed vessel.
- ❖ Stainless Steel polished top.

Standard Features:

- ❖ Temperature Range -10 to +120°C.
- ❖ PID Temperature Controller with Soak Timer.
- ❖ Control accuracy of $\pm 0.1^\circ\text{C}$ for water & $\pm 0.2^\circ\text{C}$ for oil.
- ❖ High Temperature safety cut-out - self resetting type.
- ❖ Excellent stirring enables uniformity better than 0.2°C .
- ❖ Resolution 0.1°C .
- ❖ Two bright LED displays for process temperature and set temperature / time.
- ❖ Powerful external pumping @ 9.0 Lit/min.
- ❖ Bath opening: 145 x 150 mm.



Model	Bath	Temp. Range	Capacity	Heater	External Size L/W/D in mm	App. Shipping Details Net / Gr. / Volume
#8506	Refrigerated Circulating EQUIBATH	-10 to +120°C	6 lit.	1.2 kW	460 x 410 x 410	30 kg / 32 kg / 0.1m ³

MultiLab

No.51/23, Arathoon Road, Off Appavu Lane,
Royapuram, Chennai - 600 013, Tamil Nadu, India
Ph:044-25984175, 45526026, 094441 62346
Email: multilabindia@gmail.com, www.multilab.biz